

YEAR 2018

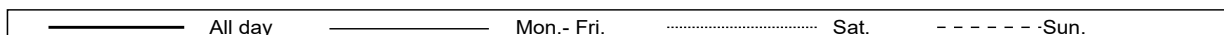
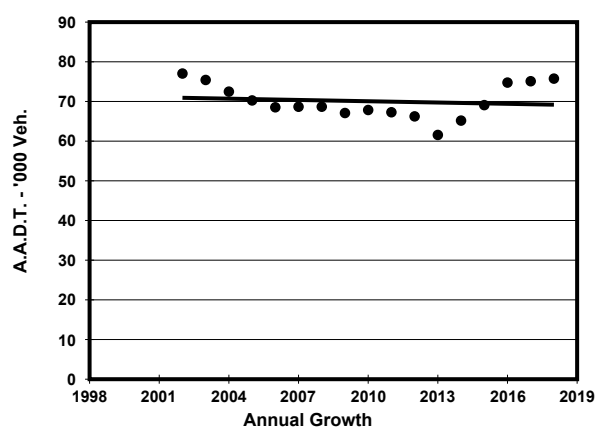
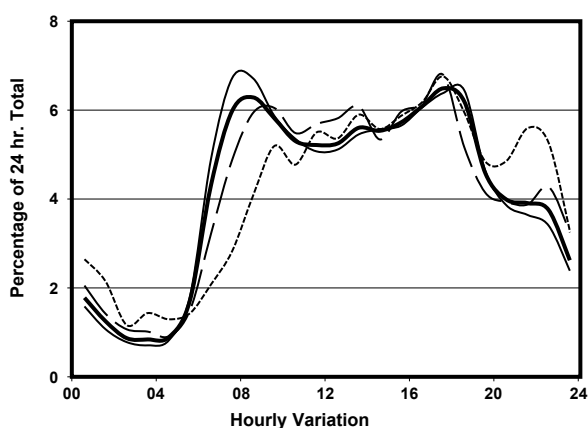
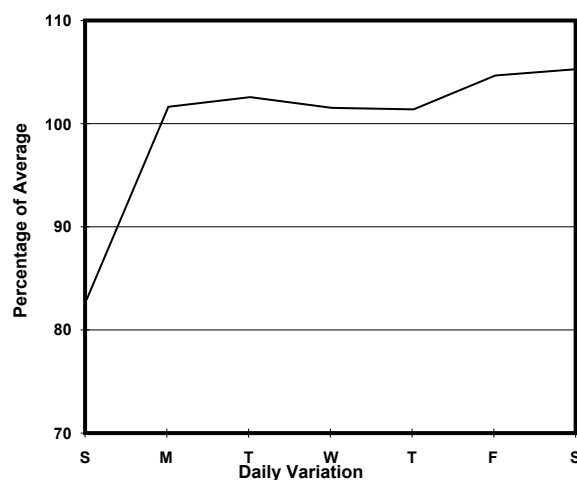
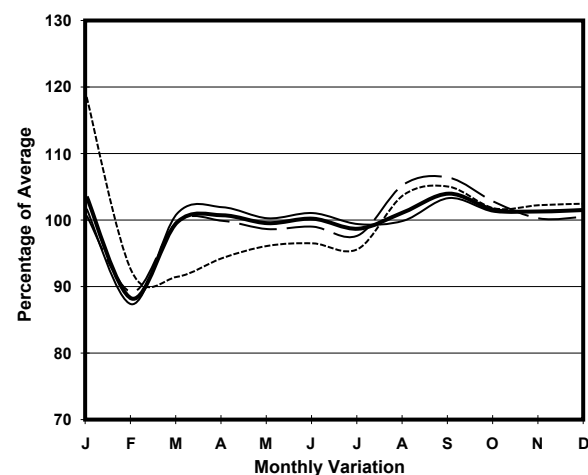
LINK TUEN MUN RD (from CASTLE PEAK RD - TSUEN WAN
to TSING LONG HIGHWAY - TING KAU BRIDGE)

CORE STATION
ROAD NETWORK
ROAD TYPE

5035
MAJOR
EXPRESSWAY



1. TRAFFIC FLOW VARIATION AND GROWTH



2. TRAFFIC CHARACTERISTICS (BY DIRECTION)

Parameter	All - Day	Mon. - Fri.	Sat.	Sun.
EAST BOUND				
A.A.D.T.	37850	39100	40930	31040
R 12 / 24 - %	71.8	72.2	72.8	67.9
R 16 / 24 - %	83.5	82.8	85.1	85.9
AM Peak Hour	0700-0800	0700-0800	0900-1000	0900-1000
One-way flow at AM peak hour	3100	3630	3260	1920
T - % (AM)	-	-	-	-
PM Peak Hour	1600-1700	1600-1700	1700-1800	1700-1800
One-way flow at PM peak hour	2280	2370	2580	2060
T - % (PM)	-	-	-	-
Prop.of commercial vehicles - 16 hr.	-	-	-	-
WEST BOUND				
A.A.D.T.	37910	39220	39810	32000
R 12 / 24 - %	67.2	68.6	65.8	60.2
R 16 / 24 - %	87.9	89.1	86.1	83.2
AM Peak Hour	0900-1000	0900-1000	0800-0900	0900-1000
One-way flow at AM peak hour	1880	2060	1790	1360
T - % (AM)	-	-	-	-
PM Peak Hour	1800-1900	1800-1900	1700-1800	1700-1800
One-way flow at PM peak hour	3130	3470	2900	2210
T - % (PM)	-	-	-	-
Prop.of commercial vehicles - 16 hr.	-	-	-	-

3. OTHER INFORMATION AND COMMENT